

Product Specification

Source Voltage	DC3V (4A dry cell batteries x 2)
Source Current	30 mA or lower
Wave Frequency	2.4 GHz
Modulation	FSK
Number of Channel	1~6-ALL for 6 CH
Ambient Temperature	-10~50 °C (Non-condensing)
Reaching Distance	30 m (varies depending on the condition)
Product Size	W 30 mm x H 163 mm x D 15 mm
Product Weight	Approx. 36 g

Cleaning

- Whenever necessary, wipe the product with dry, clean, and soft cloth.
- Refrain from directly applying water, thinner or other chemicals to the product. Those materials may cause damages, discoloring, and distortion to the product.

Disposal of Packing Materials

- Do not leave packing material at the installation site.
- Separate combustible cardboard from noncombustible waste.
- Observe the local waster separation regulations when disposing of the materials.

TOSO

Electric wave Remote-control Switch

FM Remote-Control Transmitter 2.4G

No. N-10093001

Instruction Manual

Thank you for purchasing TOSO products. To ensure safe use of this product, please read the following thoroughly and keep this manual stored.

Guide for Distributors and Installation Contractors

This manual contains information for a user to safely operate this product. Please provide this manual to a customer.

INDEX

■ Caution	2
■ Instructions and directions for use.....	3
■ Product View and Part Names	4
■ Installation.....	5
■ Operation Methods	5
■ How to operate the remote control	5
■ Setting of Address No. of FM Remote control receiver 2.4G (sold separately).....	6
■ Connecting with Motorized Product of FM Remote control receiver 2.4G (sold separately).....	6
■ Operation method (Single/Simultaneous operation)	6
■ Intest ID, Venewood AT.....	6
■ Troubleshooting.....	7
■ Product Specification.....	8
■ Cleaning	8
■ Disposal of Packing Materials	8

CAUTIONS

* This manual contains cautions and instructions for safe use of the product. Please read it carefully before using to ensure appropriate use.

● **This document illustrates the dangers of using this product without taking necessary precautions. Please refer to the symbols below for different types of safety points.**



Warning

Illustrates that if this product is misused, there are dangers of serious injuries or possible fatal accidents.



Caution

Illustrates that if this product is misused, there are dangers of casualties or possible physical damage of the establishment or home furniture.

● **This document illustrates safety points to be followed using the symbols below.**



Illustrates specific actions which are prohibited.



Illustrates specific guidelines which must be followed.

■ **Precautions upon installing the product (Please read before installation.)**



Warning

- ⊘ This product is intended for indoor use. Please do not use it for outdoor purposes.
- ⊘ Locations subject to high temperatures and high humidity, or areas where water may leak, should be avoided.
- ⊘ Do not use this product close to a TV, radio transmitting station or area with strong magnetic force. Transmitting distance may be shortened or may not operate correctly.
- ❗ When installing the product, examine the strength and quality of the backing material.
- ❗ The provided securing screws are for wood only. For other wall materials, please use the appropriate screw type.



■ **Safety in Use (Please read thoroughly)**



Caution

- ⊘ This product is for TOSO motorized products only. Do not use it for any other products.
- ⊘ Do not attempt to disassemble this product. For repair, consult your original retail shop.
- ⊘ This product requires two 4A dry cell batteries. Do not use any other types.
- ❗ If the transmitter is not used for a long time, remove batteries from this product.
- ⊘ Do not use this product in places where it may come into direct contact with water.

- ⊘ Strong shocks may cause damage to this product.
- ⊘ Do not place this product close to a strong magnetic force. The electronic components of this transmitter may not function properly if affected by a strong magnetic force.
- ⊘ Please do not use this product around open flames.
- ⊘ Do not attempt to operate the product other than instructed.
- ⊘ Around the area where the motorized product is to open and close, please remember to clear all objects.



Instructions and directions for use

- This product is a radio device that uses the 2.4 GHz band.
- This product uses a frequency band utilized in many industrial, scientific, and medical devices such as microwave ovens in addition to the mobile identification internal radio stations used by factory production lines and special low-power radio stations.



Warning

- ⊘ Do not place or use this product near medical devices.
- ⊘ Do not bring this product into an operating room, ICU, or CCU, etc.
- ⊘ Keep this product at least 22 cm away from a person with an artificial pacemaker. Radio waves from this product can affect artificial pacemakers.

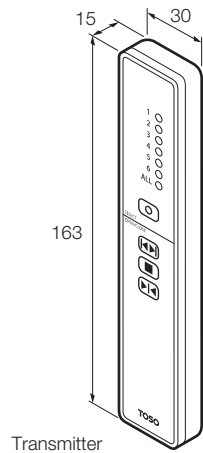


Caution

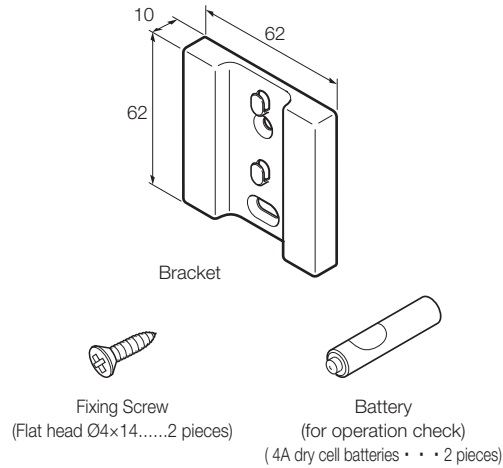
- ❗ Before using this product, be sure to check that there are no mobile identification internal radio stations for factory production lines or special low-power radio station in use nearby.
- ❗ To reduce radio wave interference, keep this product away from the following products as much as possible: microwave ovens, wireless LAN devices, digital cordless telephones or fax machines, audio-visual or office automation equipment with radio transmission.

Product View and Part Names

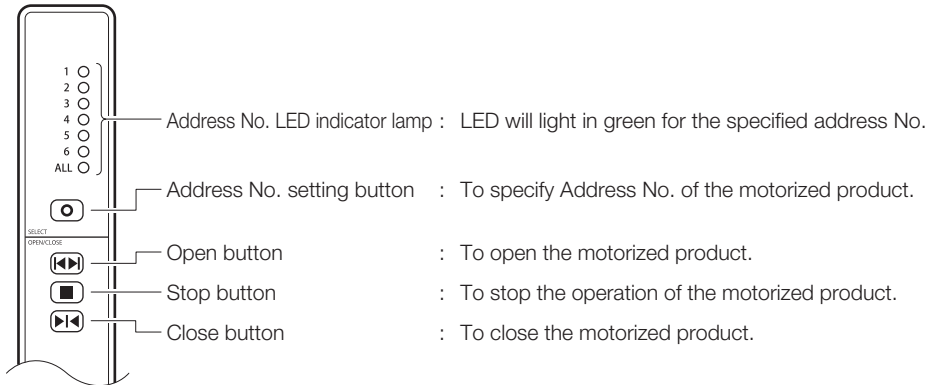
Product View



Accessories

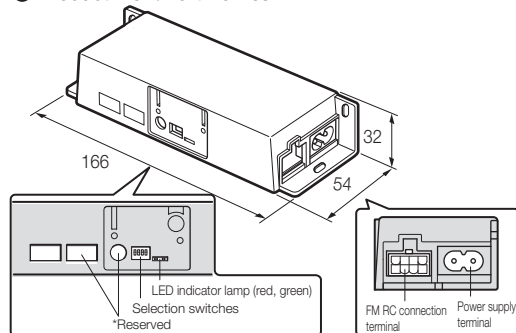


Parts Name

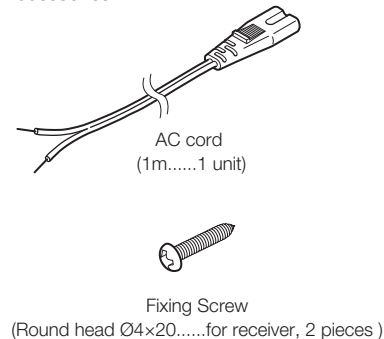


FM Remote-control receiver 2.4G (Sold separately)

Product View/Part Names



Accessories



Installation

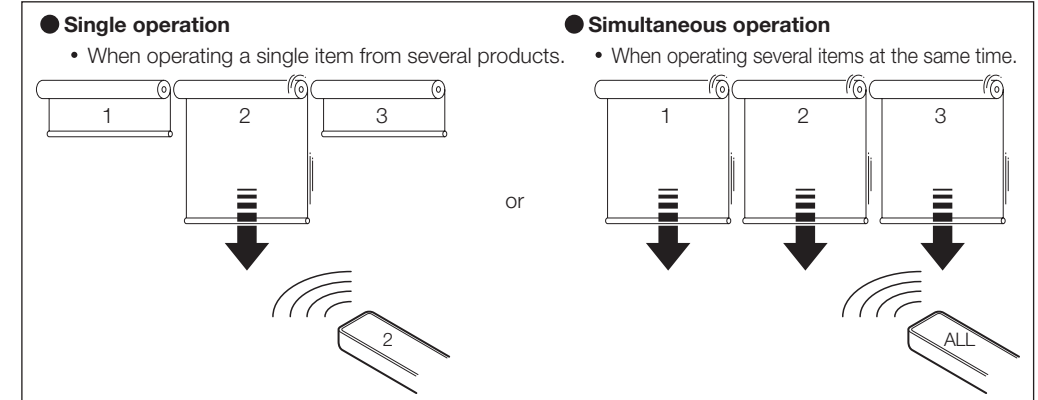
- Mount a Transmitter Bracket to a wall with fixing screws.

Caution

- ⊘ The provided securing screws are for wood only. For other wall materials, please use the appropriate screw type.

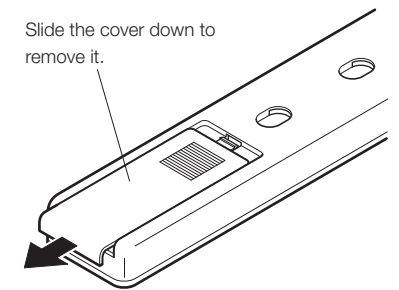
Operation Methods

- FM Remote-control transmitter 2.4G and FM Remote-control receiver 2.4G can be operated in the following method.



How to operate the remote control

- 1 Open the battery cover on the back of the transmitter.
- 2 Set the batteries (2 pcs ×4A dry cell batteries) into the transmitter.



Caution

- ⊘ Place batteries in the correct direction in the corresponding plus and minus sign as indicated.
* Batteries provided with the product are for test run purposes only. When you use this product, prepare new batteries.

- 3 Press Address No. setting button and check the LED indicator to see the address lights are displayed in order.

Single/Simultaneous operation: → ALL → 1 → 2 → 3 → 4 → 5 → 6

* LED will turn OFF when transmitter button is not pressed for 30 seconds.

Setting of Address No. of FM Remote control receiver 2.4G (sold separately)

- See the FM Remote control receiver 2.4G's operation manual for setting procedure and set the address No.

Connecting with Motorized Product of FM Remote control receiver 2.4G (sold separately)

- See the FM Remote control receiver 2.4G's operation manual for setting procedure and set the receiver to the motorized product.

Operation method (Single/Simultaneous operation)

- Use each button to operate the motorized product.

- * Approx. 30 seconds after ending the transmitter operation, LED address lights will automatically turn OFF.
- * When you press the button on the transmitter again, the LED indicator for the last address No. will light.

- 1 Press Address No. setting button until the LED indicates the Address No. of the product you operate.
(If ALL is indicated, all of the transmitter can operate at the same time)

- 2 Press open button or close button to operate the motorized product. If stop button is pressed during operation, the product stops operating.

EX 1) to operate a motorized product set Address "No. 3".

- 1 Press Address No. setting button until the LED indicates the Address "No. 3".
- 2 Press open button to open the product.

EX 2) to operate products at the same time.

- 1 Press Address No. setting button until the LED indicates "ALL".
- 2 Press open button or close button to operate the motorized product. If stop button is pressed during operation, the product stops operating.

Intest ID, Venewood AT

- * Operation method vary for Intest ID.
- * For Intest ID, FM Remote control, 3 button and 5 button cannot be used alternately.

- 1 See the FM Remote control receiver 2.4G's operation manual for setting procedure and set the NO. 3 switch to ON.

- 2 Press Address No. setting button until the LED indicates the Address No. of the product you operate. (If ALL is indicated, all of the transmitter can operate at the same time)

- 3 Press open button and the slat will start turning. It opens automatically when the turn completes.

- * When the concave side of slat is open and facing the indoor, it will open by itself.
Press close button and the slat will start turning. It closes automatically when the turn completes.
- * When the convex side of slat is open and facing the indoor, it will close by itself.

- 4 Press stop button while slat is turning or lifting/lowering and the operation will stop.

- * If you want to adjust the angle of the slat, press stop button while the slat is turning.

Troubleshooting

Condition		Possible Causes and Solution
Not operating	Transmitter's Address LED indicator does not light	<ul style="list-style-type: none"> ● Batteries not placed. ⇒ Please fit in batteries. ● Batteries placed in reverse direction. ⇒ Please place batteries in correct direction.
	Address LED indicator is blinking	<ul style="list-style-type: none"> ● Error is occurring ⇒ Take out the batteries to restore the error and fit the batteries again correctly.
	Receiver's LED green light does not blink when transmitter's button is pressed.	<ul style="list-style-type: none"> ● Address No registered in the receiver has not been set. ⇒ See p.9 in the "Setting of address number" of the FM Remote control receiver 2.4G's operation manual for setting procedure and set the Address No. in the receiver.
	Others	<ul style="list-style-type: none"> ● Receiver is not properly connected to the motorized product. ⇒ See p.7 in the "Connection Method" of the FM Remote control receiver 2.4G's operation manual for setting procedure and properly connect the receiver to the product. ● Receiver is set near a metal or concrete object that reflect electromagnetic waves. ⇒ Place the receiver 1m or more away from the object that reflect electromagnetic waves. ● 2 or more receivers are set close to one another. ⇒ Set apart the receivers at least 1m away from each other. ● Receiver is set close to electrical and electronic equipment. ⇒ Set apart the receivers at least 1m away from electrical and electronic equipment.
Unstable operation	Transmitter's Address LED indicator displays ON and OFF intermittently.	<ul style="list-style-type: none"> ● Batteries are old. ⇒ Replace old batteries with new batteries. ● The product hasn't been used for a long time, and batteries have been left installed during that period. ⇒ Check contact points of the batteries. Clean the areas if necessary.
	Others	<ul style="list-style-type: none"> ● Receiver is set near a metal or concrete object that reflect electromagnetic waves. ⇒ Place the receiver 1m or more away from the object that reflect electromagnetic waves. ● 2 or more receivers are set close to one another. ⇒ Set apart the receivers at least 1m away from each other. ● Receiver is set close to electrical and electronic equipment. ⇒ Set apart the receivers at least 1m away from electrical and electronic equipment.

Battery Replacement

- Batteries can last approximately one year, depending on frequency of use.
- If batteries are old, please replace them with new two 4A dry cell batteries.